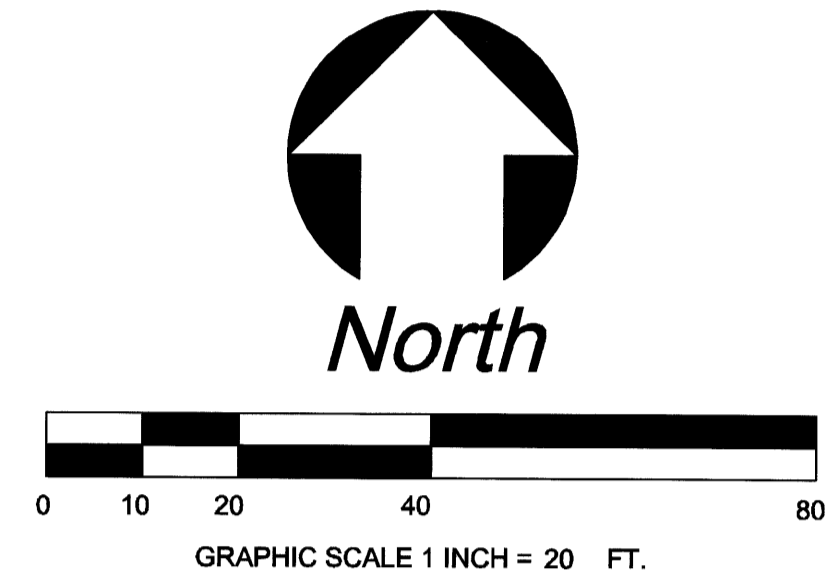


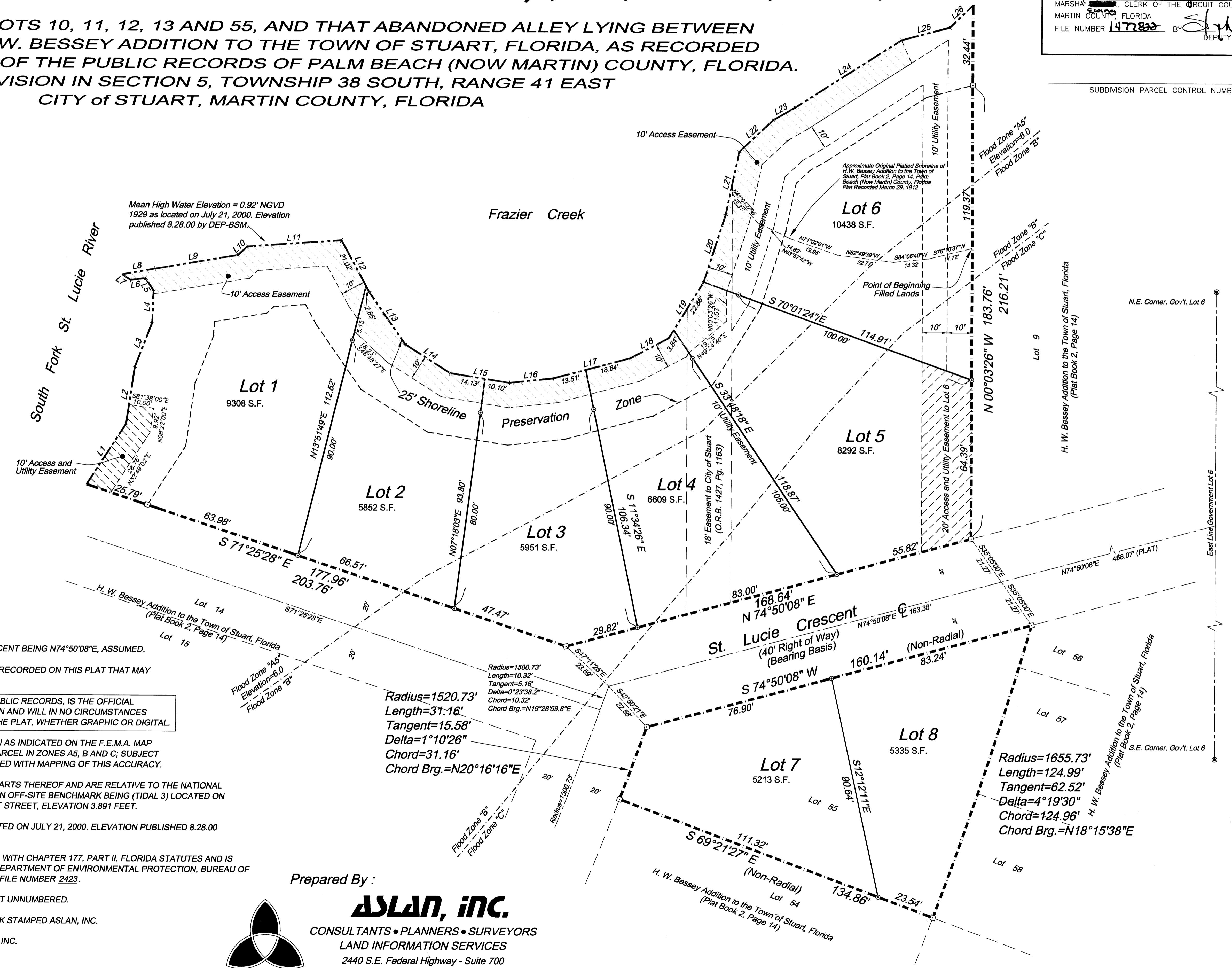
# A Plat of FRAZIER CREEK VILLAGE RPUD

BEING A REPLAT OF LOTS 10, 11, 12, 13 AND 55, AND THAT ABANDONED ALLEY LYING BETWEEN LOTS 12 AND 13, OF H.W. BESSEY ADDITION TO THE TOWN OF STUART, FLORIDA, AS RECORDED IN PLAT BOOK 2, PAGE 14, OF THE PUBLIC RECORDS OF PALM BEACH (NOW MARTIN) COUNTY, FLORIDA. A SUBDIVISION IN SECTION 5, TOWNSHIP 38 SOUTH, RANGE 41 EAST CITY OF STUART, MARTIN COUNTY, FLORIDA

CLERKS RECORDING CERTIFICATE  
 I, MARSHA STILLER, CLERK OF THE CIRCUIT COURT OF MARTIN COUNTY, FLORIDA, HEREBY CERTIFY THAT THIS PLAT WAS FILED FOR RECORD IN PLAT BOOK 14, PAGE 99 MARTIN COUNTY, FLORIDA, PUBLIC RECORDS THIS 26th DAY OF January, 2000.  
 Marsha Ewing  
 MARSHA STILLER, CLERK OF THE CIRCUIT COURT  
 MARTIN COUNTY, FLORIDA  
 FILE NUMBER 1477890 BY [Signature] DEPUTY CLERK

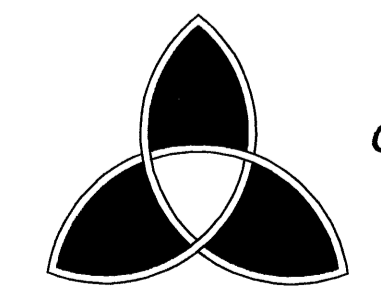


LINE	LENGTH	BEARING
L1	29.14'	N32°49'02"E
L2	23.29'	N08°22'00"E
L3	19.21'	N20°51'27"E
L4	13.00'	N02°22'15"E
L5	6.02'	N33°33'38"W
L6	5.90'	S82°06'12"W
L7	4.17'	N57°27'44"W
L8	13.42'	N79°42'15"E
L9	33.92'	N80°26'33"E
L10	5.12'	N46°46'34"E
L11	37.92'	N85°57'18"E
L12	23.87'	S28°23'10"E
L13	25.52'	S34°35'28"E
L14	21.62'	S57°23'03"E
L15	24.23'	S80°57'20"E
L16	17.61'	N83°49'51"E
L17	32.16'	N74°56'28"E
L18	17.35'	N61°49'57"E
L19	26.70'	N31°32'11"E
L20	28.59'	N17°42'56"E
L21	26.27'	N11°55'44"E
L22	18.59'	N46°29'02"E
L23	10.09'	N60°08'28"E
L24	50.79'	N57°12'29"E
L25	20.21'	N74°58'13"E
L26	12.96'	N45°41'12"E



**NOTES & LEGEND**

- BEARINGS REFER TO THE CENTERLINE OF ST. LUCIE CRESCENT BEING N74°50'08"E, ASSUMED.
- THERE MAY BE ADDITIONAL RESTRICTIONS THAT ARE NOT RECORDED ON THIS PLAT THAT MAY BE FOUND IN THE PUBLIC RECORDS OF THIS COUNTY.
- THIS PLAT, AS RECORDED IN ITS ORIGINAL FORM IN THE PUBLIC RECORDS, IS THE OFFICIAL DEPICTION OF THE SUBDIVIDED LANDS DESCRIBED HEREON AND WILL IN NO CIRCUMSTANCES BE SUPPLANTED IN AUTHORITY BY ANY OTHER FORM OF THE PLAT, WHETHER GRAPHIC OR DIGITAL.
- THE NATIONAL FLOOD INSURANCE PROGRAM DESIGNATION AS INDICATED ON THE F.E.M.A. MAP PANEL NO. 120165 0005 C, DATED 08/15/78, LOCATES THE PARCEL IN ZONES A5, B AND C; SUBJECT TO ANY SCALING AND INTERPOLATION FACTORS ASSOCIATED WITH MAPPING OF THIS ACCURACY.
- ELEVATIONS SHOWN HEREON ARE IN FEET AND DECIMAL PARTS THEREOF AND ARE RELATIVE TO THE NATIONAL GEODETIC VERTICAL DATUM OF 1929 AND ARE BASED ON AN OFF-SITE BENCHMARK BEING (TIDAL 3) LOCATED ON THE NORTHEAST CORNER, CITY MUNICIPAL PIER, WEST 1ST STREET, ELEVATION 3.891 FEET.
- MEAN HIGH WATER ELEVATION = 0.92', NGVD 1929 AS LOCATED ON JULY 21, 2000. ELEVATION PUBLISHED 8.28.00 BY DEP-BSM.
- THE MEAN HIGH WATER LINE DEPICTED HEREON COMPLIES WITH CHAPTER 177, PART II, FLORIDA STATUTES AND IS RECORDED IN THE PUBLIC REPOSITORY OF THE FLORIDA DEPARTMENT OF ENVIRONMENTAL PROTECTION, BUREAU OF SURVEYING AND MAPPING, AS MEAN HIGH WATER SURVEY FILE NUMBER 2423.
- = FOUND P.R.M., A FOUND 4"x4" CONCRETE MONUMENT UNNUMBERED.
- = SET P.R.M., A 4"x4" CONCRETE MONUMENT WITH DISK STAMPED ASLAN, INC.
- = SET I.R.C., AN IRON ROD AND CAP STAMPED ASLAN, INC.



Prepared By:  
**ASLAN, INC.**  
 CONSULTANTS • PLANNERS • SURVEYORS  
 LAND INFORMATION SERVICES  
 2440 S.E. Federal Highway - Suite 700  
 Stuart, FL 34994 (561) 288-4880 Fax 288-0128

D:\Projects\Carnat\Gwg\CDV-1\mat-plat-s1-s2\FCDV-plat-s2-r6.dwg Thu Nov 02 10:46:12 2000 ASLAN, Inc. -GIS Surveying & Mapping